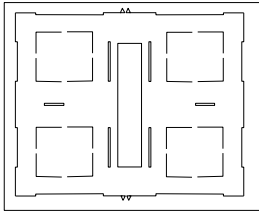
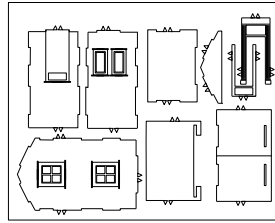


Stückliste „Obere Rutenbeck“

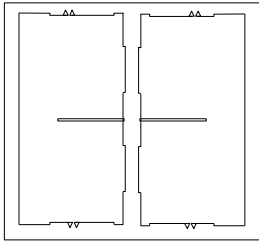


Bodenplatte

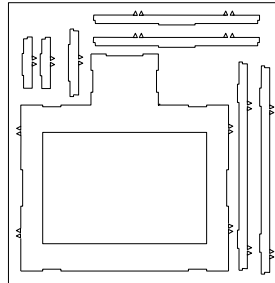


Anbau incl. Dach

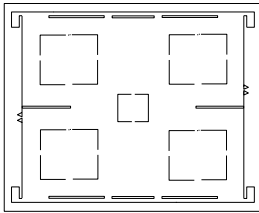
Türrahmen



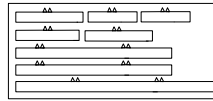
Boden
Obergeschoss



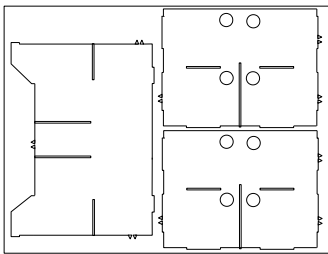
Sockel



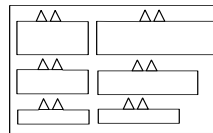
Boden
Dachgeschoss



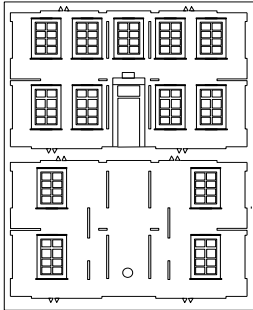
Sockelauflagen



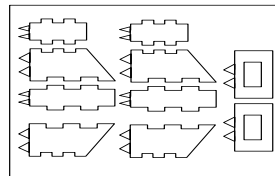
Längswand
Querwände



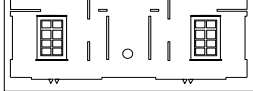
Treppen



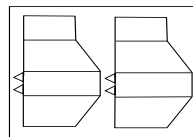
Vorderfront



Schornsteine



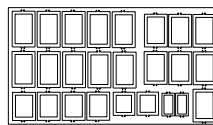
Rückfront



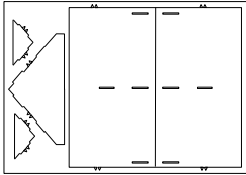
Schornsteinauflagen



Giebelwände
und
Türgiebel



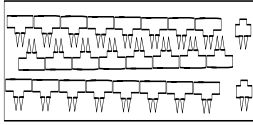
Fensterrahmen



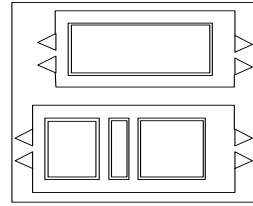
Dach



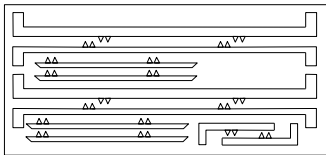
Fensterbänke



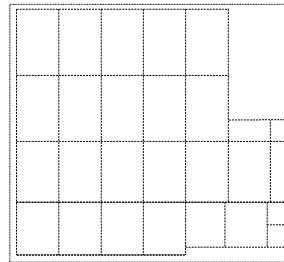
Fenstersimse
und
Türsimse f.
Anbau



Türen



Dachgesims
und Giebel-
verkleidungen



Fensterscheiben

Ausserdem:

Schieferauflagen für Vorderfront, Rückfront, zwei Giebel, Anbau (3 Teile), Eckstreifen und zwei Dächer